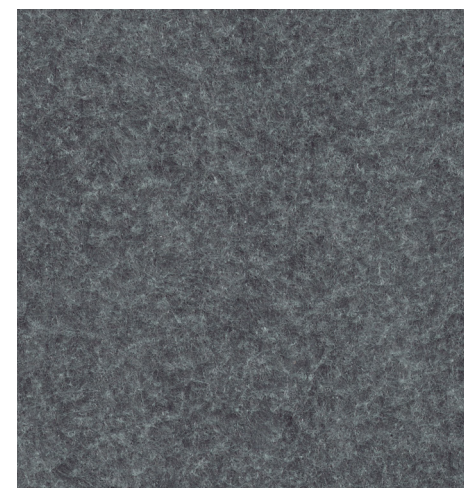


Felt 9900

Felt 9900



Sterling
3057



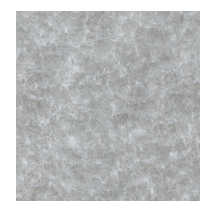
White*
8888



Ivory
3206



Cork
3065



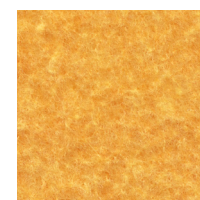
Aluminum
3055



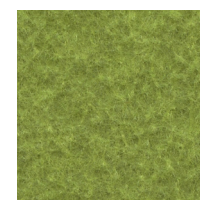
Dune
3062



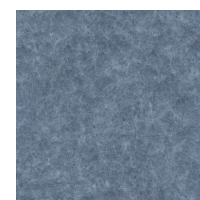
Latte
3063



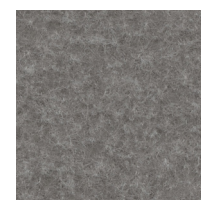
Maize
3204



Pear
3210



Sky
3052



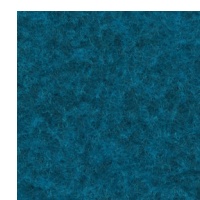
Pebble
3056



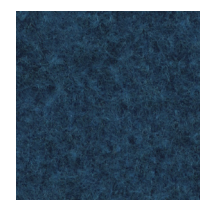
Mink
3066



Saffron
3367



Aegean
3051



Liberty
3053



Deep Sea
3054



Ebony
3059



Cherry
3362



Azalea
3049

Specifications

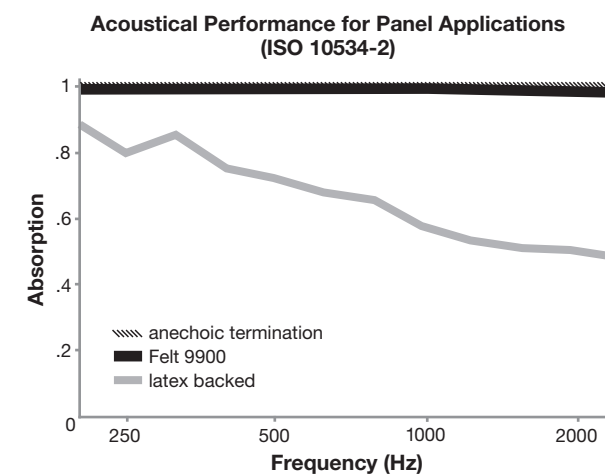
Content	80% polyester 20% post-consumer recycled polyester
Weight	10.2 ± 1.0 oz./lin. yd.
Width	64" min. useable
Repeat	none

Cleaning Code

Standard Care Label W-S. Clean with water based cleaning agents, foam or pure, water free solvents. Vacuuming or light brushing is recommended to prevent dust and soil buildup.

Acoustical Performance

The plot below summarizes impedance tube measurements of absorption of an anechoic termination and various fabrics in front of the anechoic termination.



NRC of anechoic termination	1.00
NRC of fabric in front of anechoic termination	0.99

Performance

- Colorfastness to Light (AATCC 16.3 Option 3)
Grade 4 min. at 40 hours

- Colorfastness to Crocking (AATCC 8)
Grade 4 min. dry & Grade 3 min. wet

- Breaking Strength (ASTM D5034)
130 lbf min. warp and 95 lbf min. fill

- Flammability (ASTM E84)
ASTM E84 Class I or A

Miscellaneous

Proudly made in North America supporting our local communities.

Application testing of this product is recommended. Colors may vary between dye lots. This is a non-directional fabric.

* Light fabric are subject to transparency issues depending on lighting intensity and internal structure. Application testing of this product is recommended.

This product is a **Feltväri™** non-woven.

Visit guilfordofmaine.com for samples.

This pattern is included in the underwriters laboratory panel fabric recognition program. Additional testing of this U.L. recognized component fabric is not required on approved panels from participating manufacturers.

*Certification Marks owned by the Association for Contract Textiles, Inc.